

Norms for DIT2 : From 2005-2009

Yangxue Dong

University of Alabama

Center for the Study of Ethical Development

Recently the Center made an attempt to generate normative information for DIT2 schema scores (including N2 score, Postconventional schema score, Personal Interest schema score, Maintaining Norms schema score) and Type indicator. Norms were generated from DIT2 database maintained by the Center from 2005 to 2009. (For brief characterizations of each index, see Guide for DIT-2, p. 18-21)

The data selection included two procedures.

- 1) The selection of data sets. Data sets were selected if more than 84% of their sample passed the various Reliability Checks and the majority of their subjects indicated that they were citizens of the U.S. A. and English was their primary language. Finally, 652 DIT2 data sets met these criteria and were considered as valid data sets. They represent diversity in age, education levels, and region within the U.S.; though no effort was made to select data sets that would provide assure appropriate representation of age, education, regions of the country, kinds of education program, etc---all variables that could skew results.
- 2) The selection of responses. Not all responses of the 652 selected data sets were included in the analysis. Responses were included if they (a) passed various Reliability Checks, (b) indicated that they were citizens of the U. S. A., and (c) indicated that English was their primary language. Finally, 53261 responses met all three criteria and were used to generate the norms.

Means and standard deviations are reported for moral schema scores by level of education and further sorted and analyzed by self-reported gender. Though these data represent some diversity in age, education levels, and regions of the country, researchers should use caution in comparing their data sets with the normative information. The information only as a general guide for comparisons of their data sets with larger samples.

DIT2 Schema Scores by Level of Education. Table 1a and 1b provide DIT2 scores for each of the moral schemas by level of education for DIT2, drawn from the large sample. Graph 1a and 1b show DIT2 mean scores for each of the moral schemas by level of education, from 2005 to 2009. Recall that data were excluded if the respondents indicated that they were not U.S. citizens or English was not a primary language. Recall also that caution should be used in interpreting these scores as data were not selected to counterbalance the variability that appears to exist among college and professional school programs.

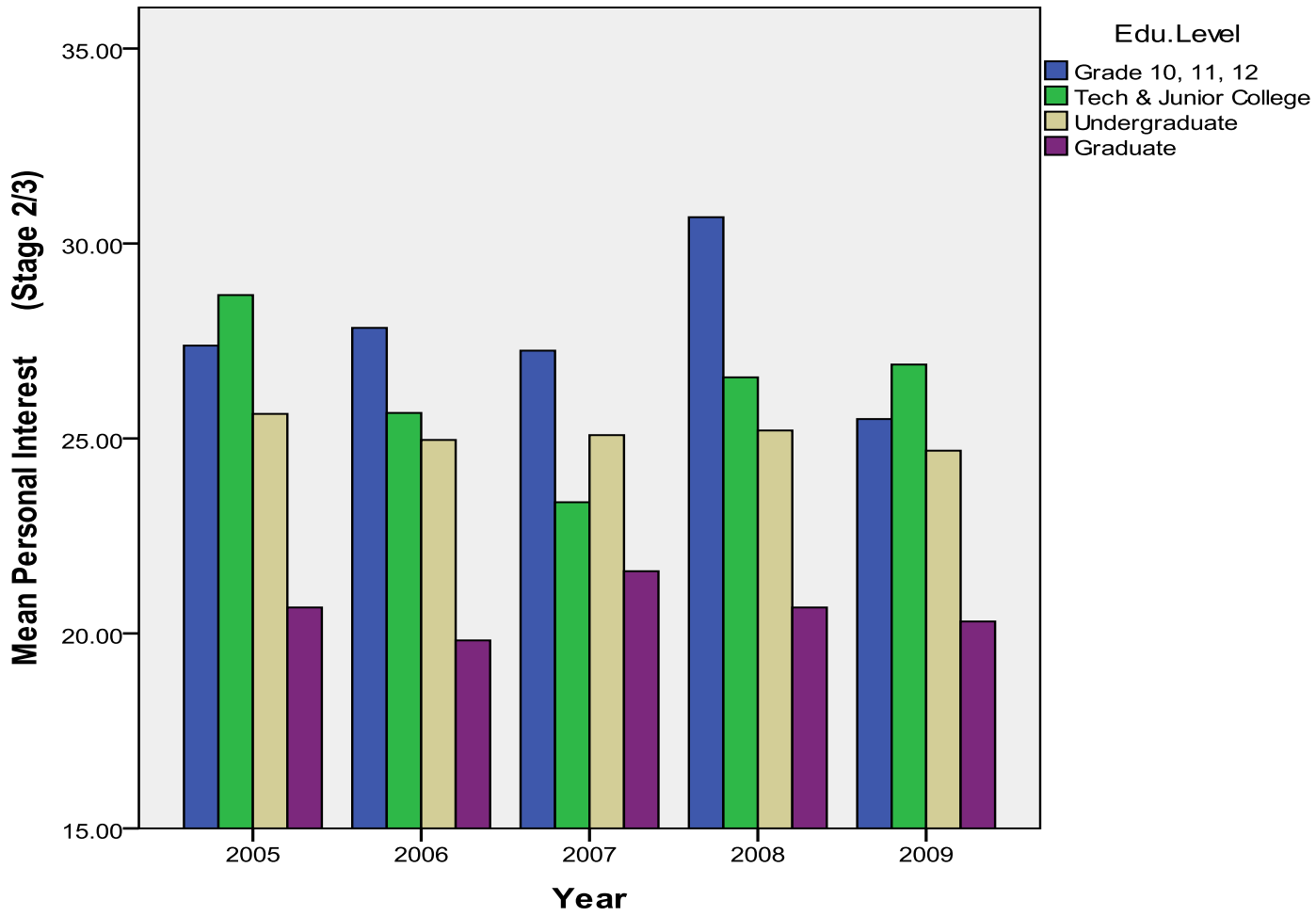
Table 1a. DIT2 Means and Standard Deviation for Schema Scores by Educational Level for respondents, who indicated their educational level in one of the following categories, reported that they were U.S. citizens and English was their primary language.

Educational Level	Schema Scores								
	Personal Interest (Stage 2/3)			Maintain Norms (Stage 4)			Post Conventional (P score)		
	Mean	Std. Deviation	N	Mean	Std. Deviation	N	Mean	Std. Deviation	N
Grade 10-12	27.70	12.60	2285	35.30	13.41	2285	31.64	14.33	2285
Voc/Tech/Jr.	26.32	11.90	986	39.97	13.08	986	27.99	13.72	986
Undergraduate	25.04	12.36	32989	35.06	13.89	32989	35.09	15.21	32989
Graduate	20.61	11.46	15496	34.07	14.36	15496	41.06	15.22	15496

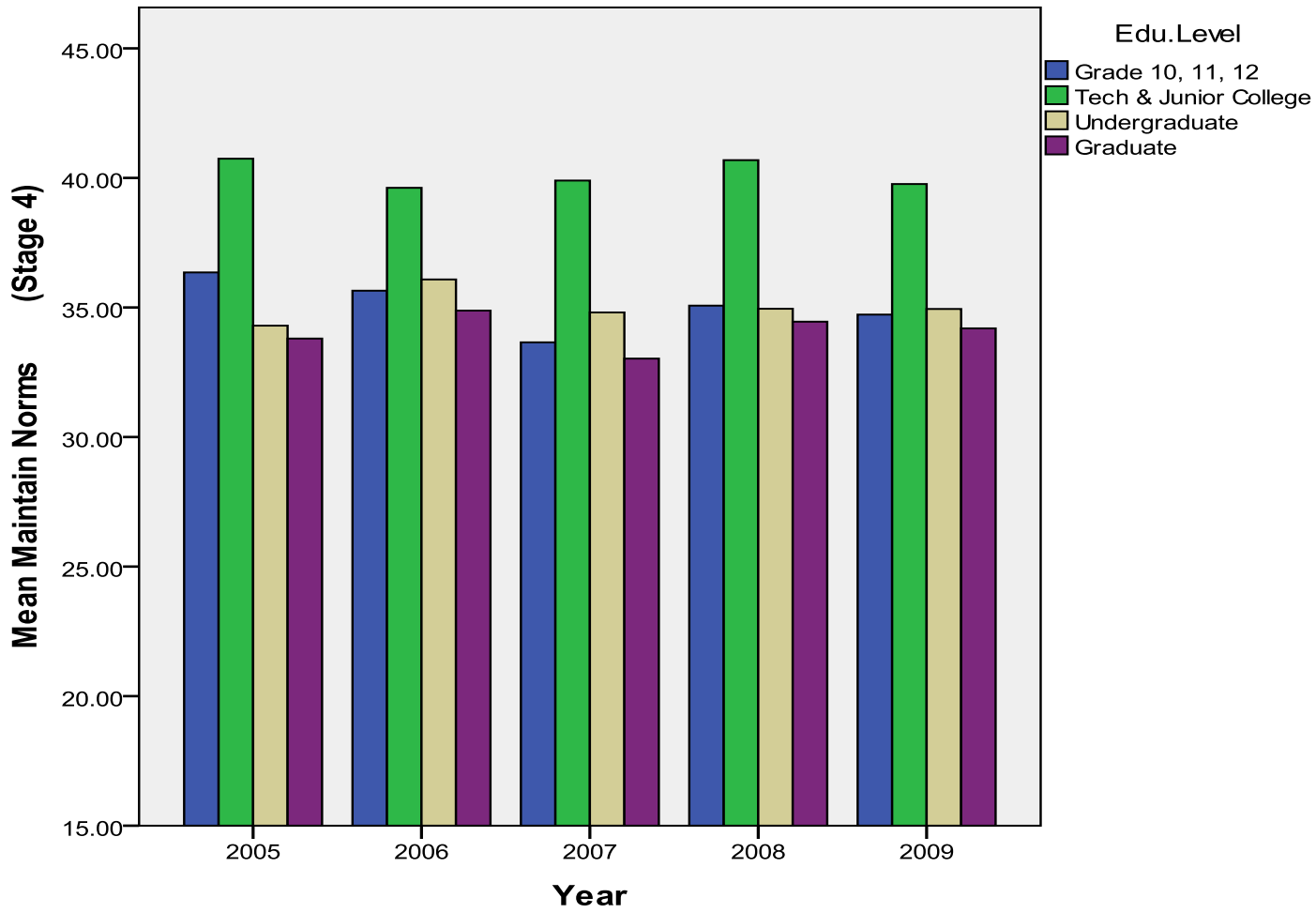
Table 1b. DIT2 Means and Standard Deviation for N2 score and Type Indicator by Educational Level for respondents, who indicated their educational level in one of the following categories, reported that they were U.S. citizens and English was their primary language.

Educational Level	Summary Scores					
	N2 Score			Type Indicator		
	Mean	Std. Deviation	N	Mean	Std. Deviation	N
Grade 10-12	30.97	14.83	2284	4.31	1.87	2285
Voc/Tech/Jr.	27.20	14.37	986	4.12	1.65	986
Undergraduate	34.76	15.45	32974	4.69	1.87	32970
Graduate	41.33	14.57	15494	5.33	1.72	15492

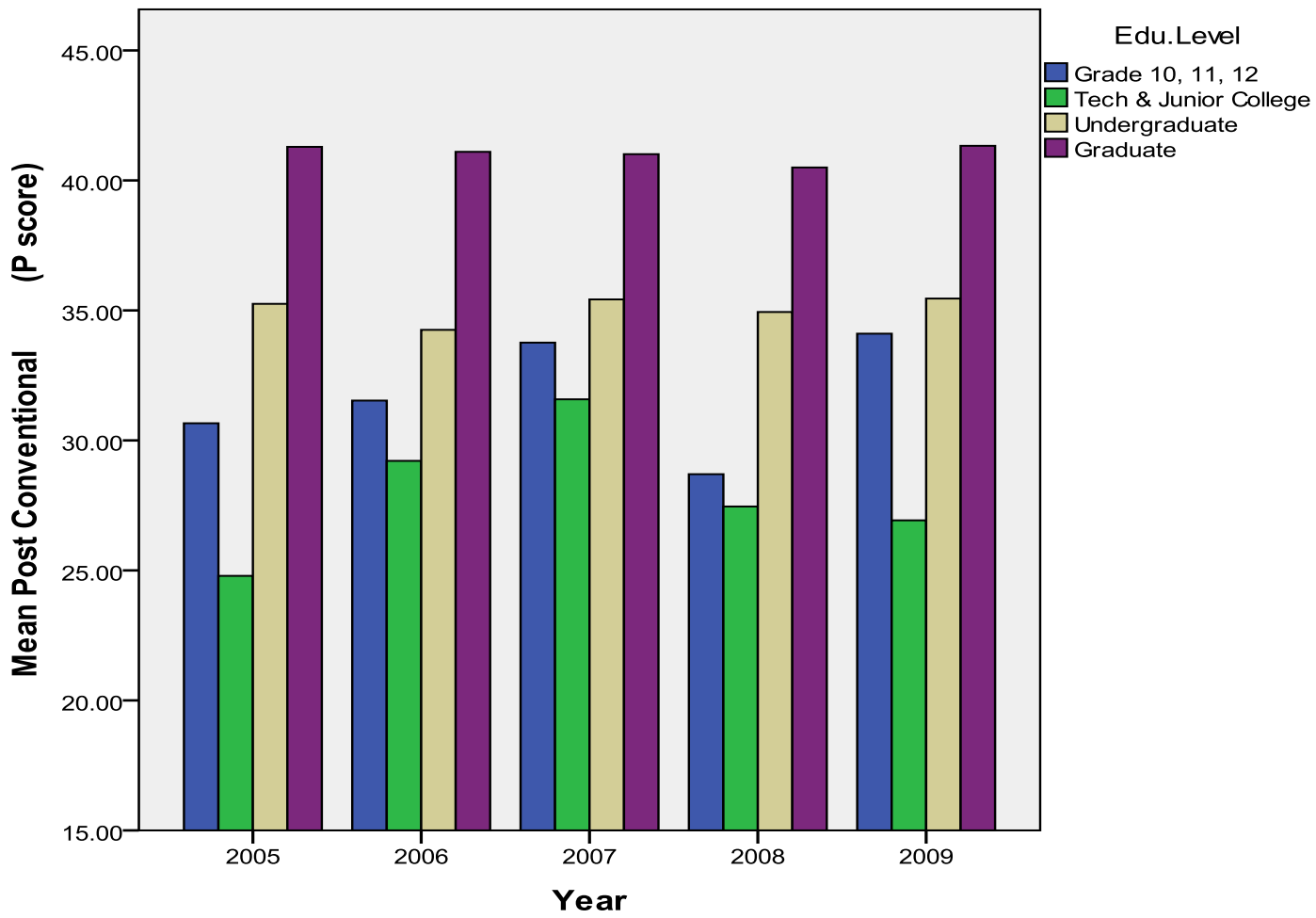
Graph 1a-1. Personal Interest Schema Score



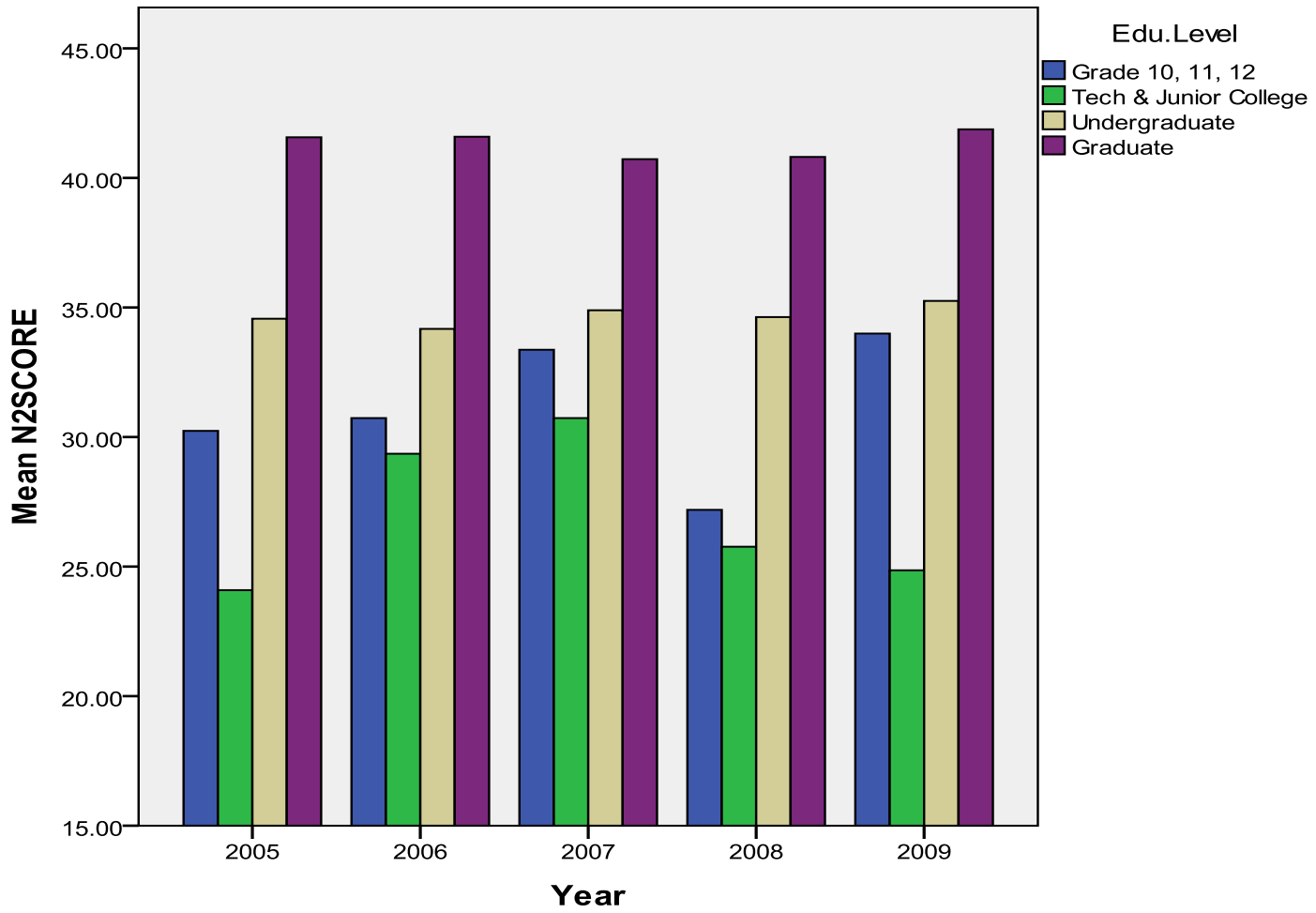
Graph 1a-2. Maintaining Norms Schema Score



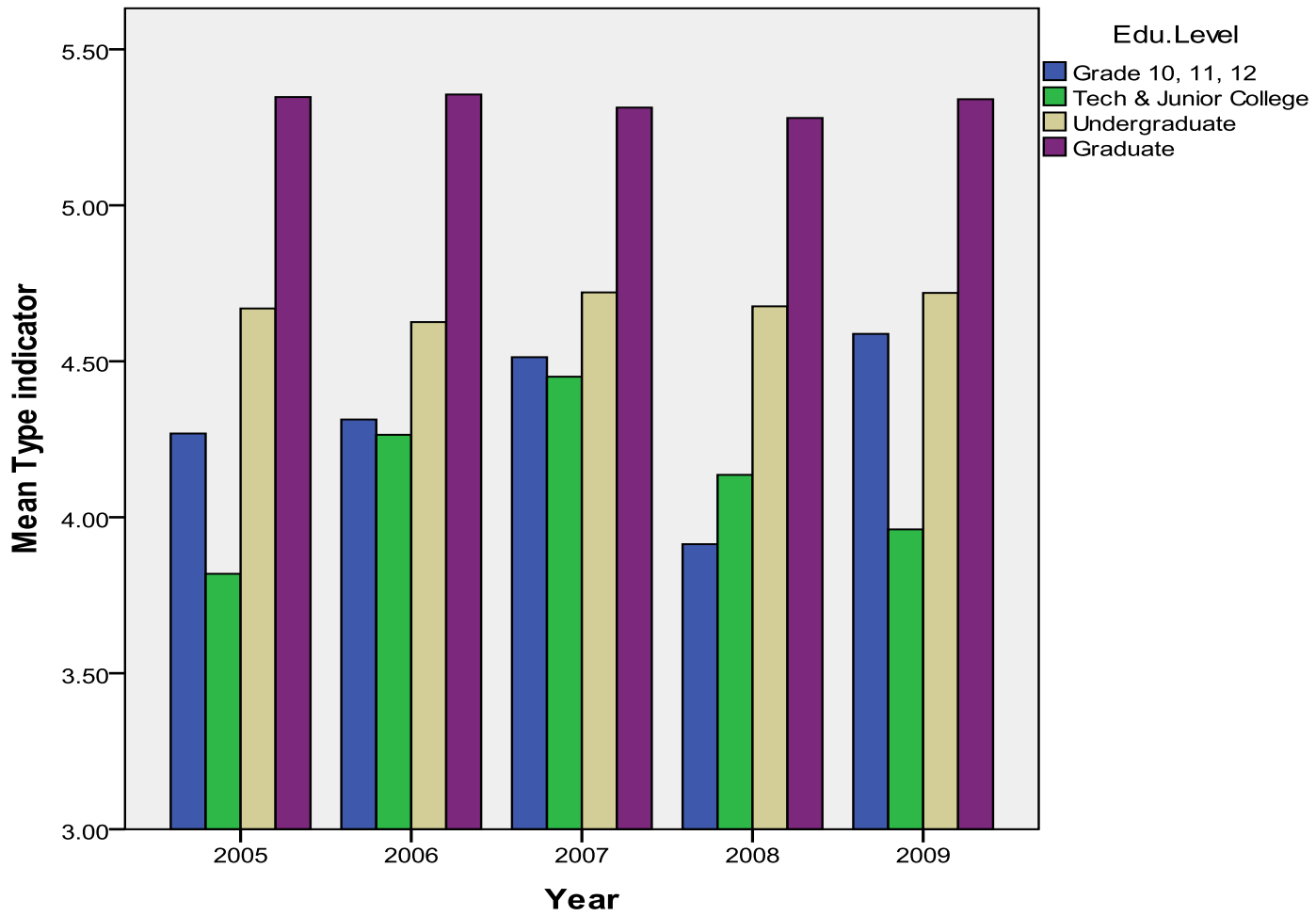
Graph 1a-3. P Score (Postconventional Schema Score)



Graph 1b-1. N2 Score



Graph 1b-2. Type Indicator



DIT2 scores by gender. Because researchers often report DIT scores by gender, observing significant though modest sex differences, Table 2-a and Table 2-b report sex differences for DIT2 N2 scores and P scores respectively. Accordingly, Graph 2-a and Graph 2-b show gender differences in N2 scores and P scores by level of education. Significant differences were found between males and females in N2 score for Grade 10-12 ($F(1,2265) = 39.492, P < .001; d = .28$), Undergraduate ($F(1,32711) = 311.221, P < .001; d = .19$) and Graduate ($F(1,15375) = 160.612, P < .001; d = .20$) levels. Significant differences were also found between males and females in P scores for Grade 10-12 ($F(1,2266) = 42.09, P < .001; d = .29$), Undergraduate ($F(1,32726) = 363.377, P < .001; d = .21$) and Graduate ($F(1,15377) = 230.422, P < .001; d = .24$) levels. However, the effect size was found to be small in both N2 and P scores for all these educational levels. No significant difference was found between males and females in N2 and P scores when the educational level is Vocational/technical school or Junior college.

Table 2-a

DIT Subgroup Means and Standard Deviation for the N2 Index by Gender

Ed. Level	Sex					
	Male			Female		
	Mean	Std. Deviation	N	Mean	Std. Deviation	N
Grade 10-12	29.59	14.61	1502	33.70	14.93	765
Voc/Tech/Jr.	27.67	14.49	535	26.71	14.28	437
Undergraduate	33.25	15.23	16121	36.25	15.52	16592
Graduate	39.79	14.43	7347	42.75	14.57	8030

Graph 2-a. Gender differences in N2 scores

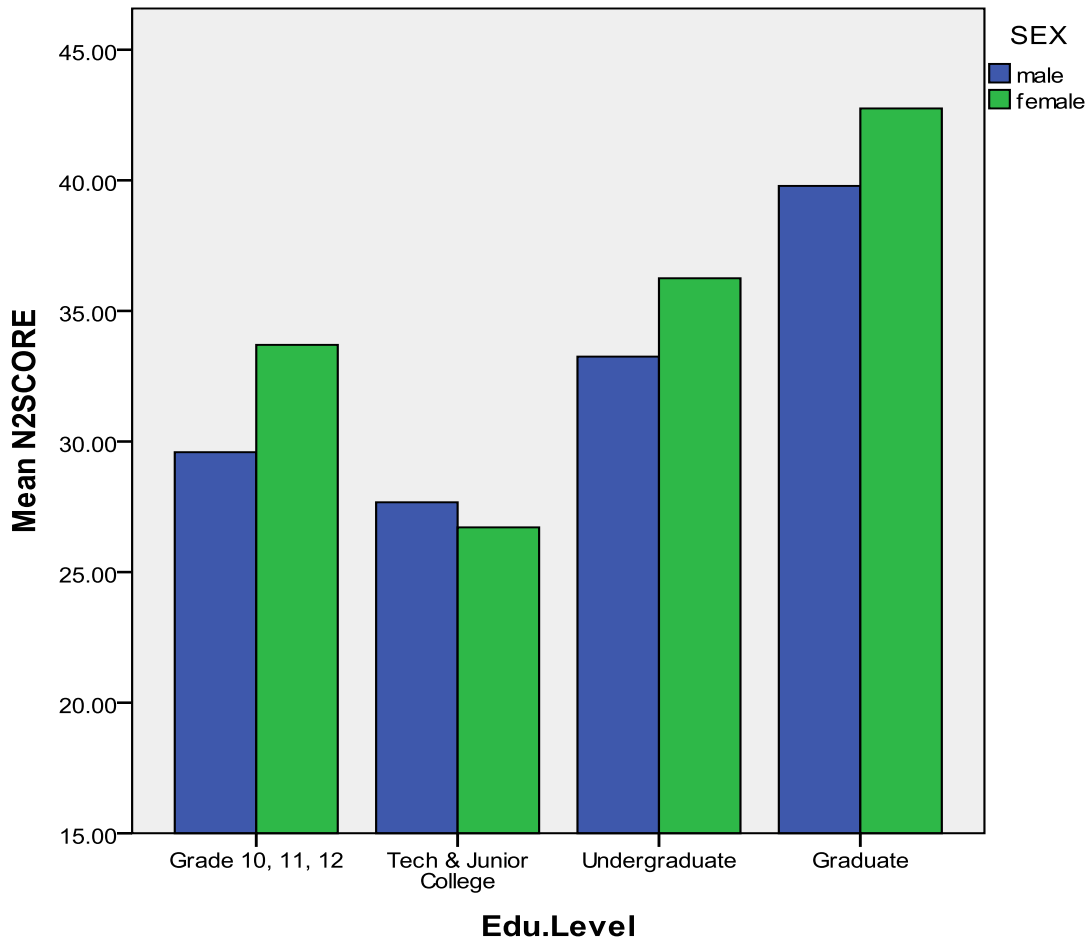
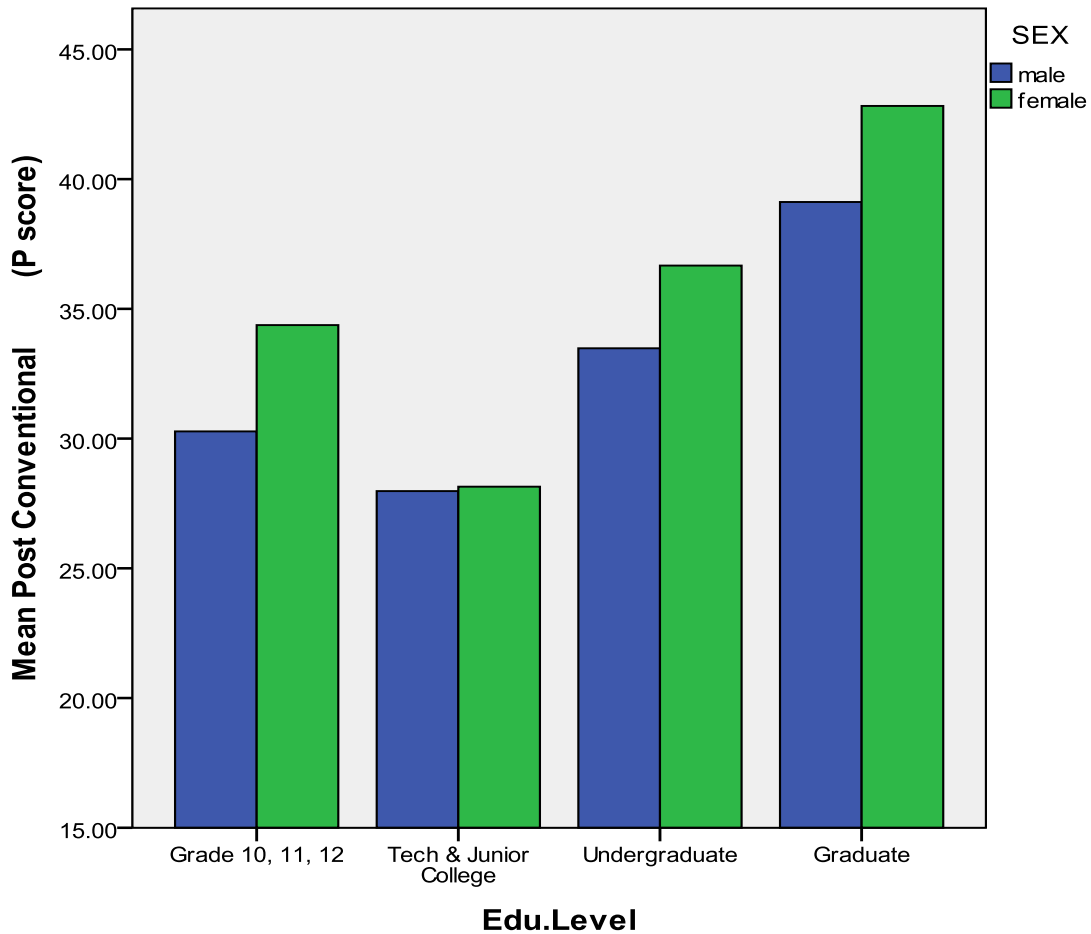


Table 2-b

DIT Subgroup Means and Standard Deviation for the P (Post conventional) Index by Gender

Ed. Level	Sex					
	Male			Female		
	Mean	Std. Deviation	N	Mean	Std. Deviation	N
Grade 10-12	30.28	14.03	1503	34.37	14.59	765
Voc/Tech/Jr.	27.98	13.71	535	28.15	13.78	437
Undergraduate	33.48	14.85	16127	36.67	15.39	16601
Graduate	39.12	14.97	7348	42.82	15.24	8031

Graph 2-b. Gender differences in P scores



Norms for DIT2 in college students (05-09)

Since many researchers use college students as their subject population, the Center has generated norms for DIT2 in college students. Responses were included if they (a) were from valid data sets, (b) passed various Reliability Checks, (c) indicated that they were citizens of the U. S. A., (d) indicated that English was their primary language, and (e) indicated that they are in college in bachelor degree program. Table 3a and 3b provide DIT2 scores for each of the moral schemas by college year. Graph 3a and 3b show DIT2 mean scores for each of the moral schemas by college year, from 2005 to 2009. Recall that data were excluded if the respondents indicated that they were not U.S. citizens or English was not a primary language. Recall also that caution should be used in interpreting these scores as data were not selected to counterbalance the variability that appears to exist among college programs.

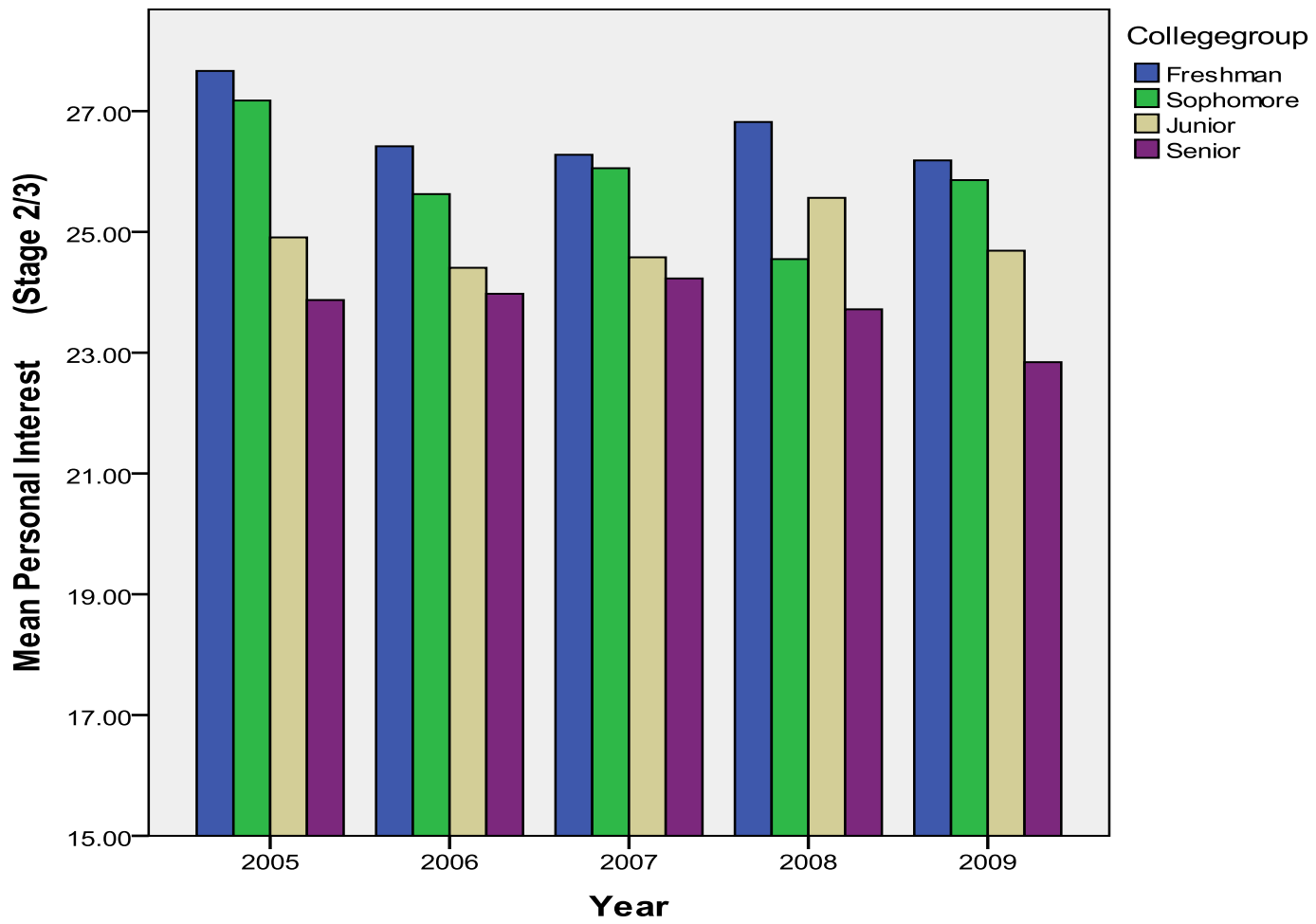
Table 3a. DIT2 Means and Standard Deviation for Schema Scores by College Year of respondents, who indicated their educational level in one of the following categories, reported that they were U.S. citizens and English was their primary language.

Educational Level	Schema Scores								
	Personal Interest (Stage 2/3)			Maintain Norms (Stage 4)			Post Conventional (P score)		
	Mean	Std. Deviation	N	Mean	Std. Deviation	N	Mean	Std. Deviation	N
Freshman	26.52	12.27	10327	34.29	13.60	10327	34.11	14.99	10327
Sophomore	25.71	12.28	3542	34.28	13.74	3542	35.23	15.35	3542
Junior	24.88	12.43	6913	35.49	13.89	6913	34.91	15.28	6913
Senior	23.67	12.27	12207	35.71	14.13	12207	35.97	15.27	12207

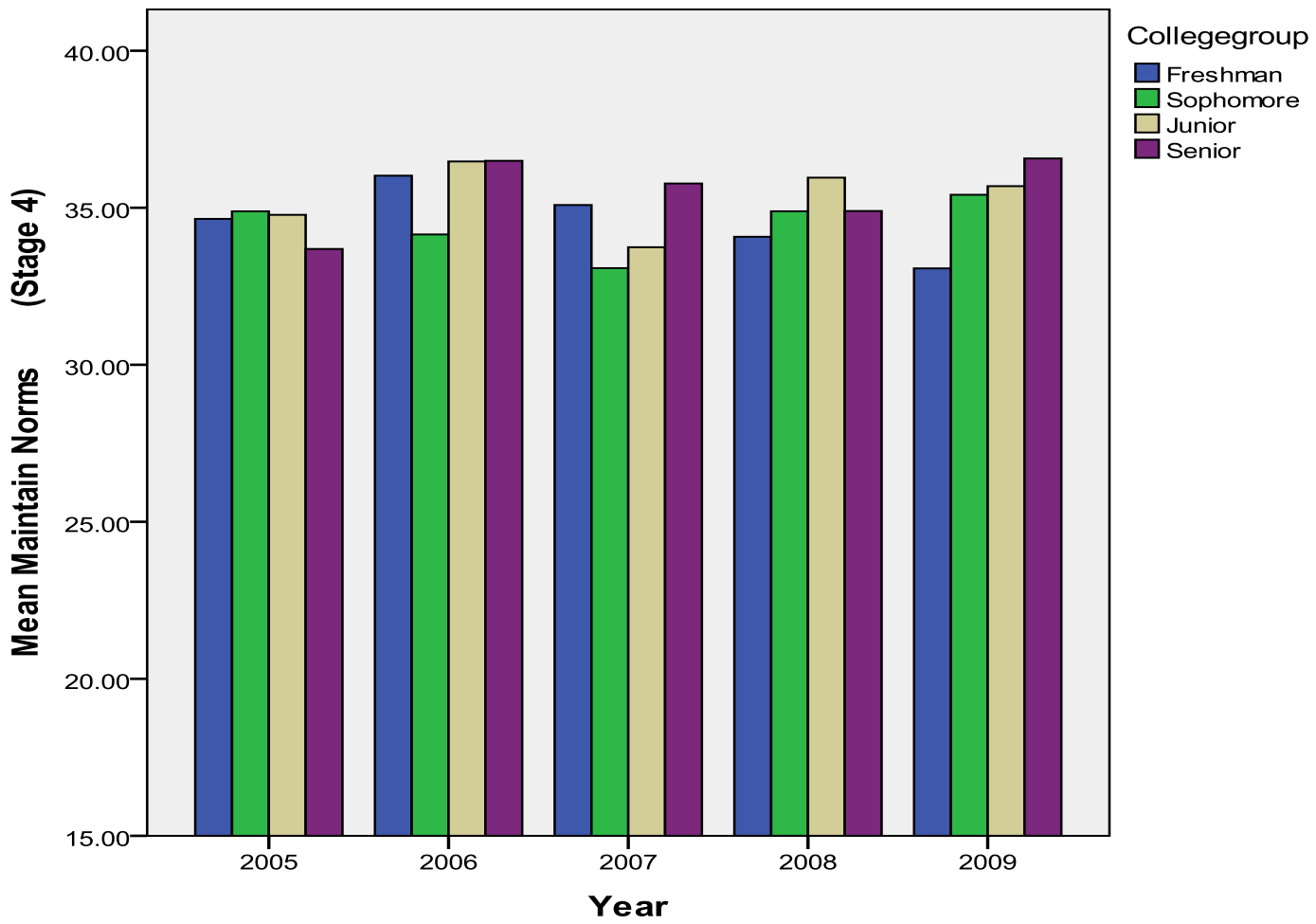
Table 3b. DIT2 Means and Standard Deviation for N2 score and Type Indicator by College Year of respondents, who indicated their educational level in one of the following categories, reported that they were U.S. citizens and English was their primary language.

Summary Scores						
Educational Level	N2 Score			Type Indicator		
	Mean	Std. Deviation	N	Mean	Std. Deviation	N
Freshman	33.42	15.25	10319	4.57	1.89	10320
Sophomore	34.60	15.65	3542	4.68	1.90	3541
Junior	34.65	15.52	6909	4.69	1.86	6907
Senior	36.01	15.42	12204	4.79	1.84	12202

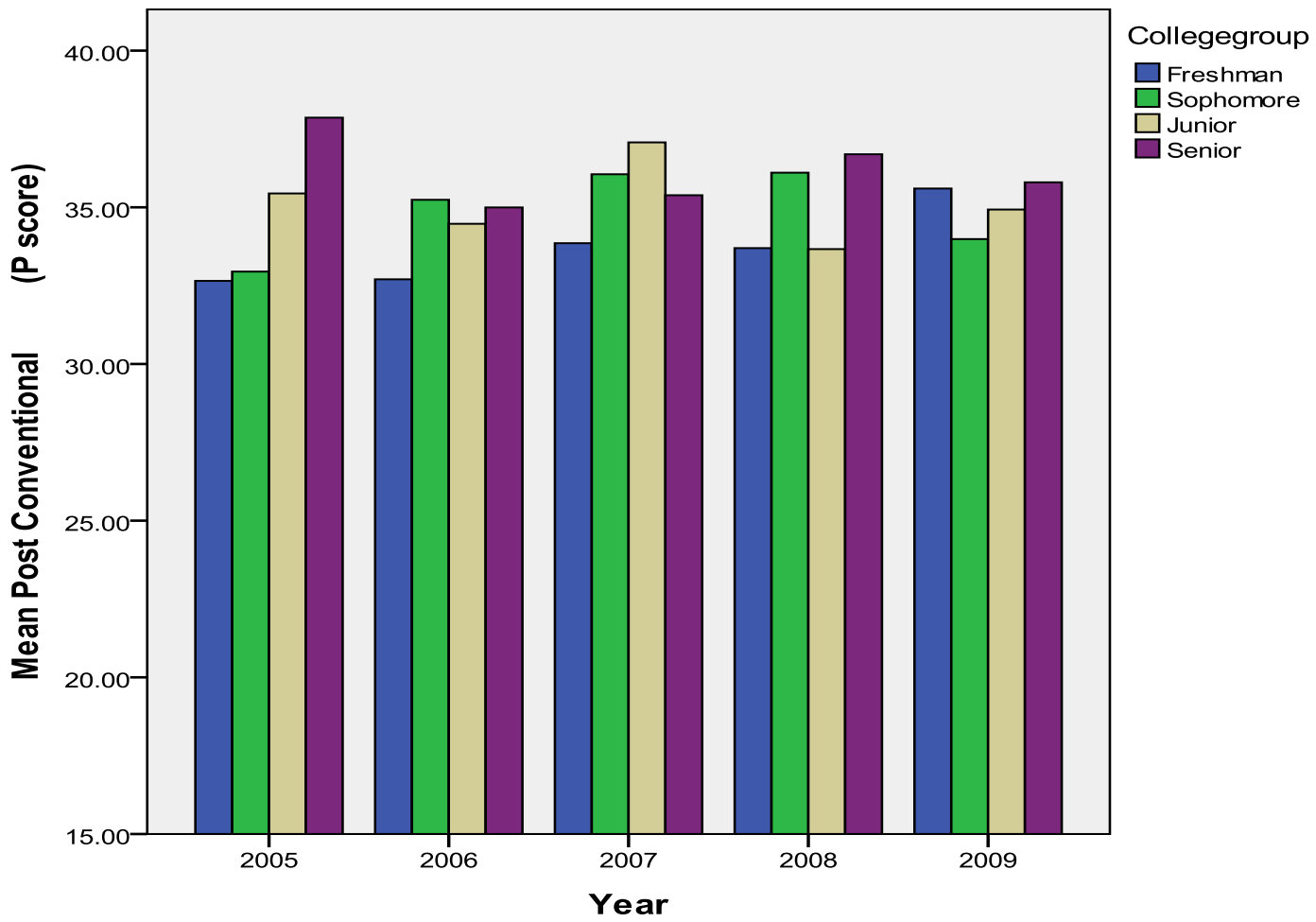
Graph 3a-1. Personal Interest Schema Score



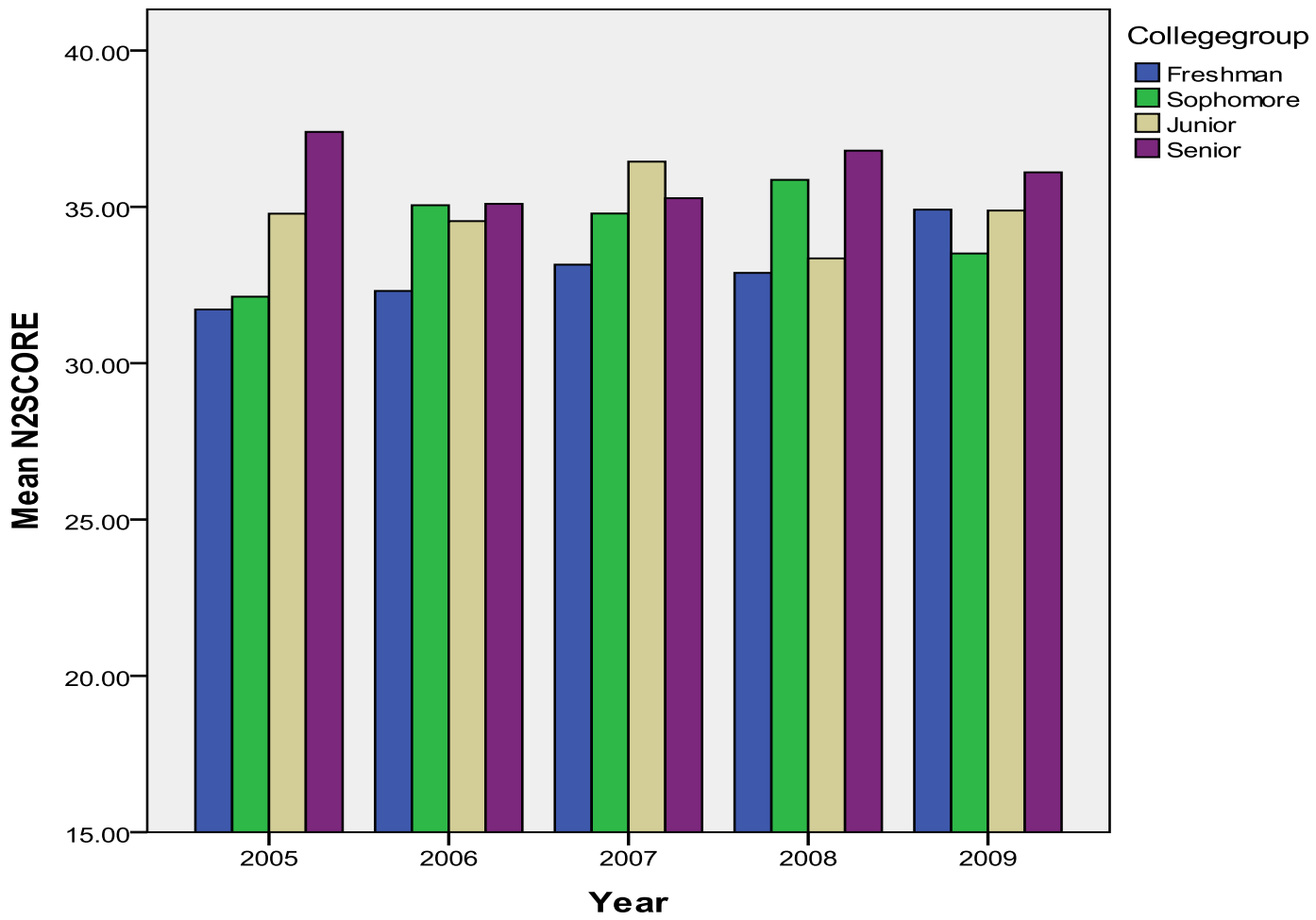
Graph 3a-2. Maintaining Norms Schema Score



Graph 3a-3. P Score (Postconventional Schema Score)



Graph 3b-1. N2 Score



Graph 3b-2. Type Indicator

